

PREVENT COCCIDIOSIS



WE-CLOP 25%

Reliable Preventive for Coccidiosis

We-Clop 25% are non-dusting, granular premix that contains 250mg/g of active ingredient Clopidol, which is a Pyridine derivative. It is effective against coccidiosis caused by *Eimeria tenella*, *E. acervulina*, *E. maxima*, *E. necatrix*, *E. brunetti*, *E. mitis* and *E. praecox*. At the cellular level, Clopidol leads to the inhibition of the development of sporozoites and trophozoites of the mentioned *Eimeria* spp.

It is historically proven to be safe and effective in coccidiosis prevention.

Structure & Activity of We-Clop 25%: We-Clop is a coccidiostat product containing the active ingredient 3,5-dichloro-2,6-dimethyl-4pyridinol.

Composition:

Each kg contains Clopidol 250 g

Dosage for Poultry:

500 g per ton of feed to achieve a concentration of 125 ppm.
In case of severe infection, the dosage can be increased up to 1 kg to achieve a concentration of 250 ppm.

Withdrawal Periods And Residue Warnings:

When feeding 0.025% clopidol, reduce dosage to 0.0125% or withdraw medication 5 days before slaughter.
Do not feed chickens over 16 weeks of age.

Indication For Usage:

We-Clop 25% is indicated for anticoccidal use against coccidiosis caused by *Eimeria tenella*, *E. acervulina*, *E. maxima*, *E. necatrix*, *E. brunetti*, *E. mitis* and *E. praecox*.



A product of:

WE CARE ANIMAL HEALTH

ISO 9001:2015 & GMP Certified Company

9/12/1A222, Kotrung, GT Road, Ward No.: 05 West Bengal



enquiry@wecareah.com
www.wecareah.com



POTENT COCCIDIOSTAT



WE-CLOP 25%

Reliable Preventive for Coccidiosis

Mixing Directions:

For Complete Rations - Type C Medicated Products

We-Clop 25% (clovidol) should be thoroughly and evenly mixed in the feed in accordance with current good manufacturing practice for medicated feed. We-Clop 25% may be used to manufacture a Type C medicated feed in the concentration range of 0.0125% to 0.025% clovidol.

To aid in even distribution of We-Clop 25% in the finished feed, prepare a mixture of We-Clop 25% in a portion of complete feed ingredient before mixing into the finished ration. Blend the mixture with the remainder of the finished feed and mix thoroughly.

Storage:

Store in a cool, dry place. Protect from direct sunlight and moisture.

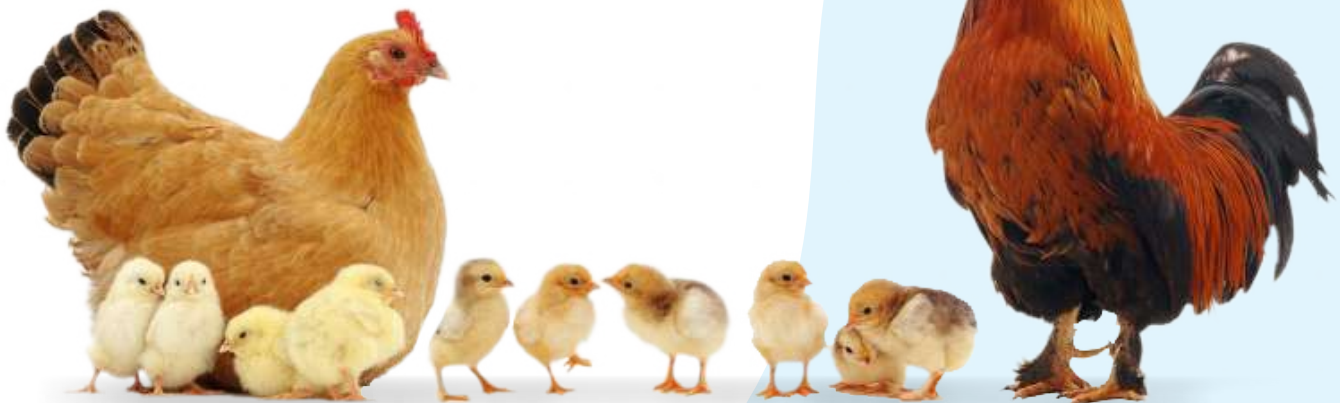
Warning:

Do not feed for laying hens

Presentation:

25 kg Pack

*Poultry feed Supplement not for Human Medical Use.



A product of:

WE CARE ANIMAL HEALTH



ISO 9001:2015 & GMP Certified Company

9/12/1A222, Kotrung, GT Road, Ward No.: 05 West Bengal

enquiry@wecareah.com
www.wecareah.com

